



HIGHLIGHTS

A short trip to Corbett Tiger Reserve, packed with a day in a jeep, viewing and tracking birds, animals, flora of the Bijrani range; short hikes into the forest; a 2-hr elephant ride; luxurious meals and stay at Camp Forktail Creek.

BEST TIME

Mid October to May



CORBETT TIGER RESERVE, INDIA
 ☎: 91-5947-287804 or 91-9411107749
 91- 8954942516
 E: info@campforktailcreek.com
 W: www.campforktailcreek.com



OUTLINE ITINERARY

- Day 1 Arrive at Camp Forktail Creek by noon. Lunch and then a short hike into the forest. Night in Camp.
- Day 2 Full day game drive into the Bijrani range of Corbett Tiger Reserve. Night in Camp.
- Day 3 Depart for onward journey, post breakfast.

PLAN WOULD INCLUDE

- Accommodation at Camp Forktail Creek for 2 nights.
- Meals from lunch on Day 1 to breakfast on Day 3, aerated drinks, mineral or filtered drinking water, tea/ coffee.
- Escorted hikes into the forests around Camp.
- A dedicated jeep for the full day game drive with a driver and a naturalist.
- Entry fees (charges levied by the forest department are subject to change without prior notice)
- a 2-hr elephant ride inside the Tiger Reserve (these rides cannot be booked in advance and are subject to availability)

EXTRA EXPENSES

Expenses of a personal nature such as beverages (except those mentioned above) laundry, telephone calls, internet, souvenirs and tips.

INFORMATION ON FOOD AND ACCOMMODATION

Camp Forktail Creek is a small jungle camp located on the north-eastern periphery of Corbett Tiger Reserve, India (23 kms from the town of Ramnagar). It is set amidst dense Sal forests and accommodation is in locally handcrafted ensuite mud huts. Elaborate and sumptuous home-cooked meals accompany each trip with enjoyable, courteous and knowledgeable naturalists, who have been in the region most of their lives.

Camp is in a village which does not have electricity but ample lighting is provided with solar powered lamps and lanterns and candles.



INTRODUCTION TO YOUR PLACE OF VISIT

Corbett Tiger Reserve is India's first and one of her finest Tiger Reserves. It supports a strong historical background, which can be traced to the early 1800's when its forests were private property of the rulers of the princely state of Tehri Garhwal.

Nestling in the foothills of the mighty Himalayas, Corbett Tiger Reserve lies mainly in the hilly districts of Nainital, Almora and Pauri Garhwal. At present the Tiger Reserve covers an area of 1318.54 sq km and includes within it Corbett National Park (520.82 sq km) Sonanadi Wildlife Sanctuary (301.18 sq km) and Reserve Forest (496.54 sq km)



Three rivers feed Corbett Tiger Reserve - Ramganga, which flows in from the northeast and meanders through the Park to form the reservoir at Dhikala. It is then dammed at Kalagarh, in the southwest; Sonanadi, a tributary of Ramganga River flows in from the northwest; Palain, another tributary of Ramganga flows in from the north.

Besides these, Mandal River flows in through the northeast, forming a portion of the north-eastern boundary and merging with the Ramganga River at Domunda. The Kosi River forms the eastern boundary of the Reserve but does not enter the park at any point.

Corbett Tiger Reserve has three distinct topographic zones within it...

-the Shivaliks in the north -the Bhabar tract of the Patlidun valley and -the swampy Terai in the south
The reserve has an elevation ranging from 400m to 1200m, thus having a rich diversity of flora, fauna and habitats.

The most dominant tree in these mixed deciduous forests is Sal (*Shoera robusta*); it accounts for about 73% of the floral coverage. The valleys thrive with grassland locally called 'chaurs' and riverine forests. About 110 species of trees, 51 species of shrubs and 33 species of grass and bamboo are listed in Corbett.

Corbett also boasts of a rich variety of faunal species. About 50 species of mammals, about 600 species of birds, 26 species of reptiles, 7 species of amphibians and many insect species are found in the reserve.

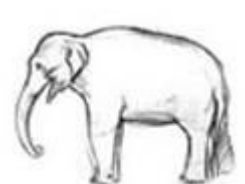
Besides, being home to the Bengal Tiger (*Panthera tigris*), Corbett is also the northern most tract of habitat for the Asiatic Elephant (*Elephas maximus*) and one can see large herds in the grasslands during the summer months. Other mammals of the reserve include the Leopard (*Panthera pardus*), Jungle Cat (*Felis chaus*), Leopard Cat (*Felis bengalensis*), 4 kinds of deer - Sambar (*Cervus unicolor*), Hog Deer (*Axis porcinus*), Spotted Deer (*Axis axis*), Barking Deer (*Muntiacus muntjak*), Nilgai (*Boselaphus tragocamelus*), Rhesus Monkey (*Macaca mulatta*) & Langur Monkey (*Presbytis entellus*), Ghoral or Mountain Goat (*Nemorhaedus goral*), Wild Boar (*Sus scrofa*), Sloth Bear (*Melursus ursinus*), Indian Grey Mongoose (*Herpestes edwardsinyula*), Small Indian Civet (*Viverricula indica*), Indian Crested Porcupine (*Hystrix indica*), Asiatic Jackal (*Canis aureus*), Yellow-throated Marten (*Martes flavigula*) etc.

There have also been rare sightings of Serow (*Capricornis sumatraensis*) and the Himalayan Black Bear (*Selenarctos thibetanus*).

The Muggler or the fresh water Crocodile (*Crocodylus palustris*), Gharial (*Gavialis gangeticus*), Common Otter (*Lutra lutra monticola*), Smooth-coated Otter (*Lutra perspicillata*), Small-clawed Otter (*Aonyx cinerea*), turtles and a variety of fishes; Golden Masheer (*Barbus Tor putitora*), Goonch (*Bagarius yarelli*), Trout, etc are seen in and around the Ramganga River.

Reptile species include Monitor Lizard or the Bengal Monitor (*Varanus bengalensis*), King Cobra (*Ophiophagus Hannah*), Indian Rock Python (*Python molurus*), Indian Trinket Snake (*Elaphe Helena*), Common Indian Krait (*Bungarus caeruleus*), Spectacled or Indian Cobra (*Naja naja*)...

Corbett is also a bird watchers paradise and some of the avian attractions include a variety of Woodpeckers, Kingfishers, Hornbills, Parakeets, Shrikes, Barbets, Drongos, Minivets, Storks, Owls, Pheasants, Eagles, Vultures, Harriers...

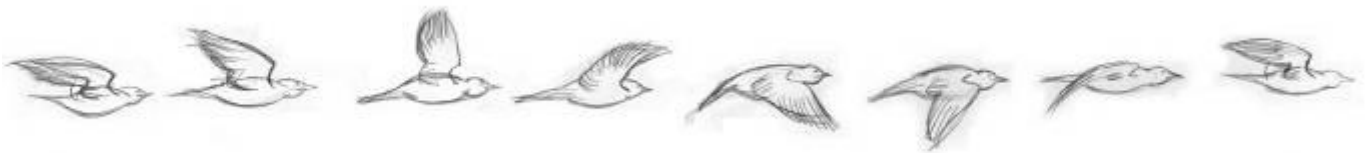


Corbett National Park has three main tourist zones.

One is called the **Bijrani Range**, entry is through Amdanda Gate. Though this is a much smaller range it is preferred for day-visits and has many criss-cross tracks, making wildlife tracking a joy. One could do a game drive here in the morning or afternoon, or the whole day. One could also stay overnight at the Bijrani Forest Rest House (FRH) and Malani FRH- both in this zone. Two-hour elephant rides are possible in Bijrani in the morning or afternoon but they are subject to availability and cannot be booked in advance. **This zone is open from mid-October to end June.**

The other range, a much larger range, is collectively referred to as **Dhikala**. Entry here is through Dhangari gate and is restricted to those who have a permit to stay overnight in any one of the Forest Rest House's within this section of the Park, namely, Sultan, Gairal, Sarpduli, Khinnanauli, Dhikala or Kanda. Each of these rest houses has a superb location- Dhikala taking the cake, being located by the reservoir of the Ramganga River which in turn is surrounded by vast grasslands. Apart from being beautiful, it's great for wildlife sighting. Two-hour elephant rides are possible at some of the rest houses in the morning or afternoon but they are subject to availability and cannot be booked in advance. **This zone is open from mid-November to mid-June.**

The third, lesser known range is **Lohachaur** with excellent fern laden patches and moist sub tropical jungles. Entry here is through Durgadevi gate. This is the best zone for birding. This is also the zone where multi-day elephant safaris are permitted by the forest department. Lohachaur and Kanda are the two bungalows accessible in this zone, where overnight stays are possible. **This zone is open from mid-November to mid-June.**



DETAILED ITINERARY

Day 1: Arrive at Camp Forktail Creek

Arrive at Camp Forktail Creek by lunch. After wash and change and a sumptuous lunch, we would take you on an escorted nature and bird walk into the Sal forests surrounding Camp. It is an excellent opportunity to walk in the cool of the forest, to be close to nature and to appreciate the varied plants, insects, birds, mammals and reptiles that inhabit this part of the country.

THE QUIETER YOU ARE, THE MORE YOU WILL SEE.

The walk will offer an in-depth knowledge on animal and bird signs in our jungles. We shall help identify some key plant, animals and bird species. Identification of hoof, pug and pad marks; forest smells, tracking in our forests to jungle survival skills...

Most walks are rewarded with a leopard or tiger pug mark and should we find one on this walk, plaster casts could be made. Back to Camp by sundown for campfire and dinner, which is leisurely and personal.

Along with the excellent cuisine, your guide and hosts will amuse and amaze you with their stories of exciting experiences. Then it is time to relax once again and enjoy carefree chatter by the fireside whilst feasting on the unique sounds and smells that your exclusive location offers, before retiring to bed in a mud hut.

Day 2: Full day game drive into the Bijrani range

Early morning, depart in an open 4WD jeep with the in-house driver and naturalist for a full day game drive to the Bijrani range to observe the wildlife of the area. Entry here is through Amdanda Gate, 20 kms from Camp. 7 kms further in from the gate is the Bijrani Forest Rest House and the elephant mount spot. From here many criss-cross jungle trails lead into the forest, making tracking in this small range a pure adrenalin rush!



Breakfast and lunch would be served inside the Reserve, specially packed by the Chef at Camp. After a full, action-packed day in the forest, we head back to Camp by sundown, just in time for that hot cup of tea. After a quick wash, join your hosts by the campfire for drinks and snacks and resume the discussions left over from the previous night. For those of you weary from the long day, dinner would be ready under the Thatch after which you could settle into your comfortable bed in a mud hut.

Day 3: Depart for onward journey

Wake up at leisure and have a lavish breakfast at Camp. Bid goodbye to your naturalist and the rest of the team and depart for your onward destination after breakfast.

